



BIOMEDICINA SPAZIALE

Magg. CSArn Paola VERDE MD PhD





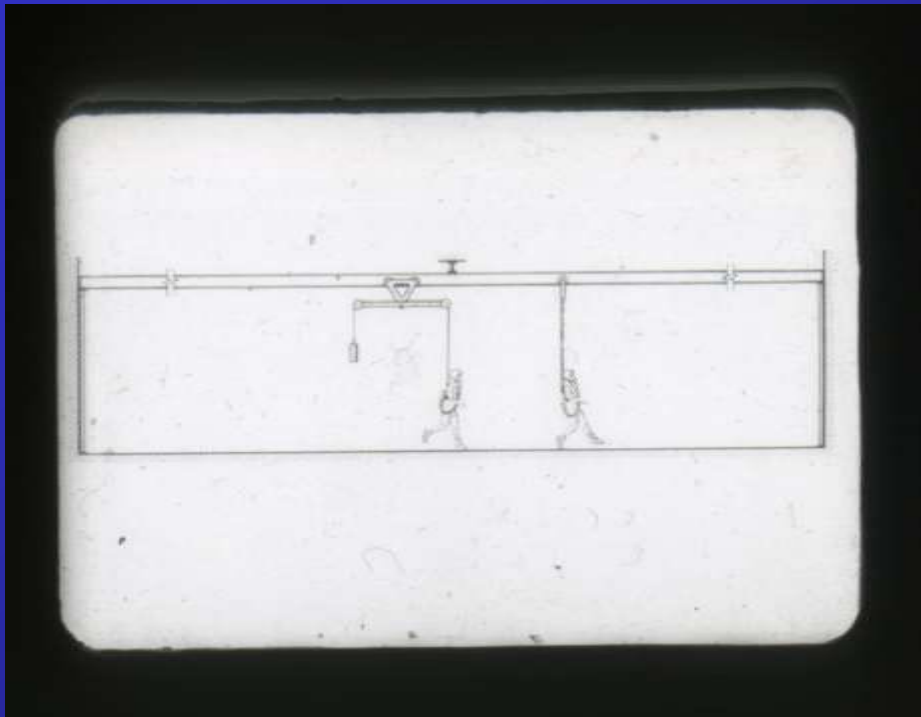
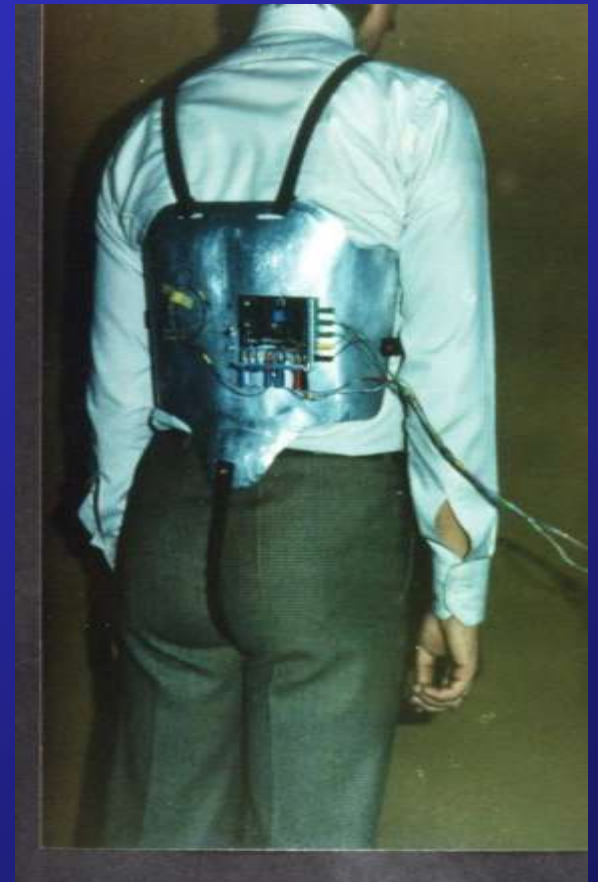




Fig. 2-27. Lunar cart being drawn on a 0° slope

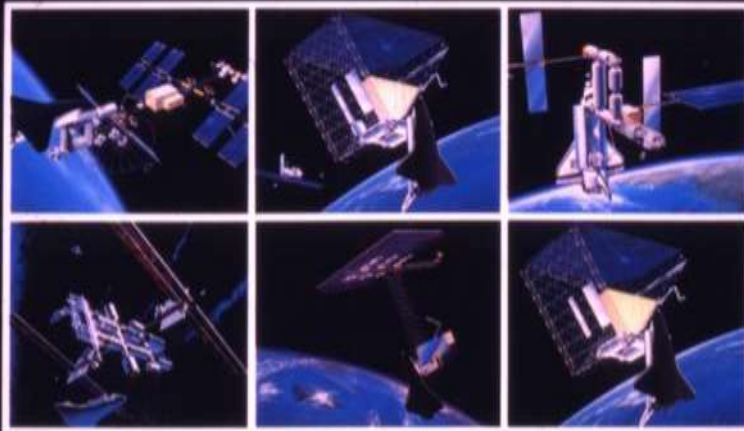






Prof. di Prampero pedalling on the ergometer for the experiment "Cardio-pulmonary function during exercise" (10th campaign, July 1990). In the background, ESTEC staff can be seen testing crew support equipment

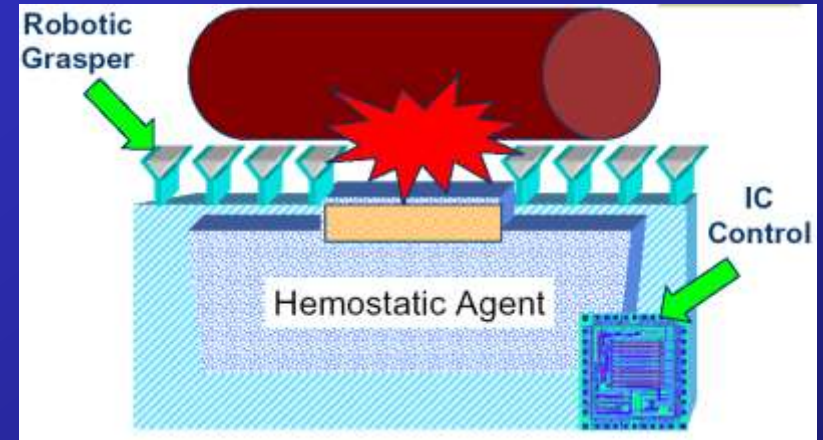




SPACE STATION...a concept



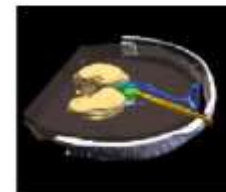
Circulating Microbots



Autonomous Surgical Robots



Treatment Planning



- ◆ Automated comparison with patient-specific data set
- ◆ Recognition of pathology



Mission to Mars?

- Extensive Surface Exploration
= *Potential for Trauma*
- Physical de-conditioning
- Radiation exposure
- Immune system
- Muscular atrophy
- Osteoporosis



